

# MENTAL ILLNESS BY THE NUMBERS.

Did you know mental illness is more prevalent than cancer, diabetes or heart disease? By 2020, behavioral health disorders will be the #1 cause of disability worldwide surpassing all other illnesses.



## 1 in 4 PEOPLE

around the world suffer from mental disorders – more than cancer, diabetes or heart disease.



## 450 MILLION

people worldwide have some type of mental disorder.

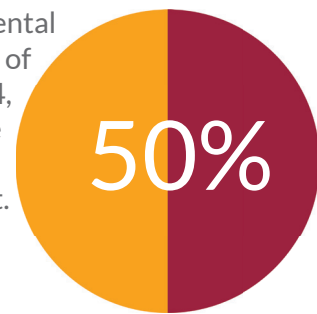


## \$2.5 TRILLION A YEAR IN COSTS

We spend \$2.5 trillion/year today (direct and indirect) on mental illness and are expected to spend \$6 trillion by 2030 worldwide. More than heart disease, cancer and diabetes.

## TEENS AT RISK

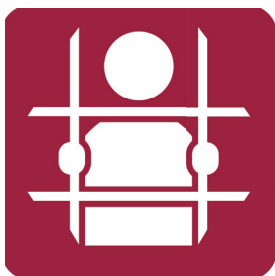
Half of those with mental disorders show signs of the disease by age 14, but it often takes more than 10 years to get treatment.



## 90 SUICIDES EVERY HOUR

Nearly 2,200 people/day (800,000/year) die by suicide—90% related to mental disorders.

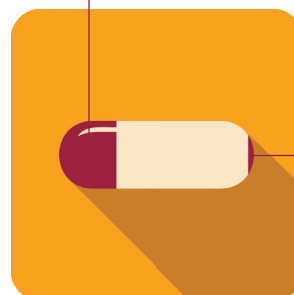
## INCARCERATIONS



360,000 people with mental illness are housed in under-equipped US jails. 35,000 are in hospitals.

## INADEQUATE HEALTHCARE

Mental illness accounts for 20% of the global burden of disease.



Only 3% of the world's healthcare budgets goes to mental health needs.

# A WORLDWIDE COMMUNITY FOR CHANGE.

**FACT:** Clubhouse International supports “Clubhouses” around the world where people living with mental illness can thrive.

**FACT:** Every day at Clubhouses around the world people living with mental illness are reclaiming their futures as part of a supportive and recovery-focused community.

## THE PROOF

**100,000**

**PEOPLE BENEFIT**

each year from 330+ Clubhouses in 34 countries.

**42% EMPLOYMENT RATE**

achieved at Accredited Clubhouses each year vs. an average employment rate of 20% for people in the public mental health system.



**MAXIMIZING DOLLARS**

One year of holistic recovery services can be delivered to Clubhouse members for the same cost as a 2-week stay in a psychiatric hospital.

## ABOUT CLUBHOUSE INTERNATIONAL

[www.clubhouse-intl.org](http://www.clubhouse-intl.org)

*Awarded the 2014 Conrad N. Hilton Humanitarian Prize  
for extraordinary contributions toward alleviating human suffering.*

Clubhouse International has succeeded in creating something that didn't exist before: a worldwide community that is changing the world of mental health. Through local Clubhouses around the world, we offer people living with mental illness opportunities for friendship, employment, housing, education, and access to medical and psychiatric services in a single caring and safe environment—so they can recover and fully participate as valued and respected members of society.

Sources: World Health Organization; SAMHSA 2012; Clubhouse International Clubhouse Profile Questionnaire; Darkness Invisible: The Hidden Global Costs of Mental Illness, by Thomas R. Insel, Pamela Y. Collins and Steven E. Hyman, Foreign Affairs, Jan/Feb 2015 Issue; and E. Harcourt, "An Institutionalisation Effect"



**Clubhouse International**

Creating Community: Changing the World of Mental Health

©2015 Clubhouse International